

# MTL PCL45USB

## Driver Installation Procedure

### (Version 2.08.14)

#### INTRODUCTION

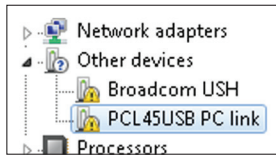
This procedure describes the PCL45USB driver installation on machines where the previous version, 1.06.20, was **never installed or has been removed**. The removal procedure for the legacy driver is described in Appendix 2 and must be completed before installing a new version; otherwise malfunction can occur during operation with PCS45 Software.

- 1) Ensure that the unzipped 2.08.14 driver is available on your machine.
- 2) Connect the PCL45USB PC-link to your machine.
- 3) If the driver installation procedure will not start automatically, then go to "Start", open the "Control Panel" and then the "System" and finally the "Device Manager". In the group "Other devices" you will see entry called "PCL45USB PC link" marked with yellow triangle and exclamation character. Click right mouse button on this item and select the top line "Update Driver Software...".
- 4) Browse on your machine, select the folder location where you have stored the new driver and select the button "Next".
- 5) Please ignore the Windows security warning and choose "Install this driver software anyway". If you have concerns regarding the safety, please refer to the attached document "LogoVerificationReport.pdf". You may also verify the driver signature when the installation procedure is completed.
- 6) Please note successful driver installation and close the procedure.
- 7) You may also note that your system will show another entry in the group "Other devices" named "USB Serial Port" and marked with yellow triangle and exclamation character. This is because the PCL45USB includes serial port capability, which is not used in the PCS45 Configuration software. You can easily ignore this entry. However if you feel unhappy with such warnings, please click right mouse button on this item, select the top line "Update Driver Software..." and repeat the steps 4 to 6. As mentioned above, the serial port feature is available but will be not used in the PCS45 Software.

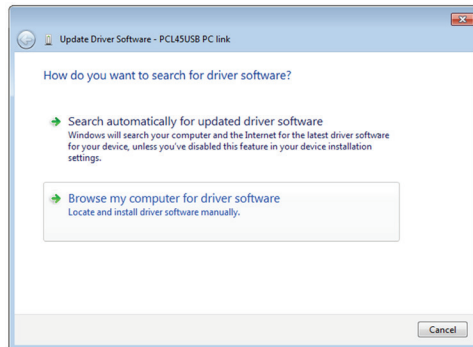
#### Note:

This version of the USB driver has been tested for use with Microsoft Windows 7 32bit and 64bit operating systems.

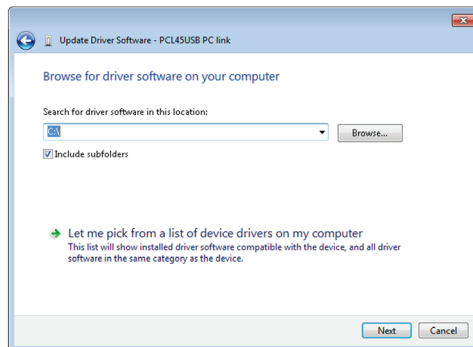
## Appendix 1 - Pictures



**Figure 1:** PCL45USB PC link entry in the Device Manager



**Figure 2:** Update driver initialisation



**Figure 3:** Driver location selection

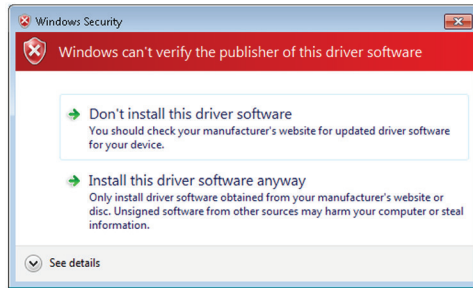


Figure 4: Windows security warning

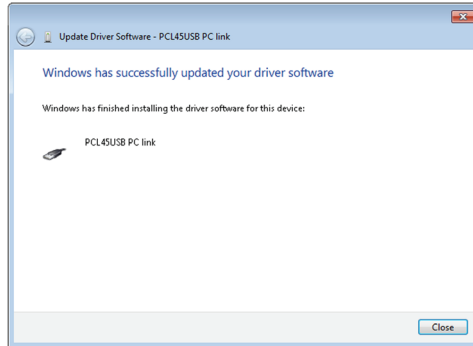


Figure 5: Successful installation information

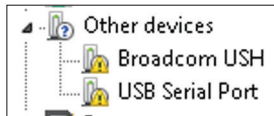


Figure 6: Irrelevant USB serial port information

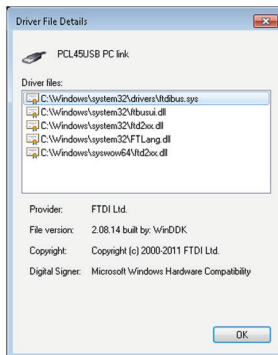


Figure 6: WHQL verification for the PCL45USB driver 2.08.14

## Appendix 2- Legacy driver removal

The PCL45USB driver update on machines with legacy driver 1.06.20 or other already installed requires **complete removal** of this driver. The highlighted word "complete removal" means that not a bit of the previous version can remain anywhere on the machine. Otherwise the system will indeed install the new driver, but keep traces of the previous version and may for whatever reason use then the old files and the PCS45 operation will fail.

The legacy PCL45USB driver complete removal is an operation which requires certain IT knowledge and experience in Windows systems configuration. Naturally, you must work methodically and take increased care in following this procedure to avoid problems with the continued operation of the pc.

- 1) Connect the PCL45USB device
- 2) Uninstall the existing driver in this way:
  - a. Go to "Start", open the "Control Panel" and then the "System" and finally the "Device Manager". In the typically last group "Universal Serial Bus Controller" you will see one entry called "PCL45USB PC link".
  - b. Select the "PCL45USB PC link", click right mouse button and choose then successively: "Properties", "Driver" and finally "Uninstall". Check the box "Delete the driver software for this device" and confirm with "OK". Please note, that as mentioned above, your system will probably ignore the last advice and will keep some legacy files on the system hard drive!

- 3) Disconnect the PCL45USB device
- 4) Open the system folder, typically "C:\Windows" and then the subfolder "Inf".
- 5) Start search process for files "OEM\*\*.INF" consisting text "FTDI" and record carefully all listed files for further use.
- 6) Review all these files with text editor and ensure that they are provided from "FTDI Ltd." and that they include the information for "PCL45USB" PC-link".
- 7) Remove all identified files "OEM\*\*.INF" together with the associated files "OEM\*\* PNF". Please take great care with the identification and removal, because deletion of the wrong files will disturb your computer.**
- 8) Re-boot your machine and continue with the new driver installation as described in the first section. Please select advanced installation type and ensure that the new driver files will be used (otherwise the system may install again the old driver saved somewhere else on your computer).



**Eaton Electric Limited,**  
Great Marlings, Butterfield, Luton  
Beds, LU2 8DL, UK.  
Tel: + 44 (0)1582 723633 Fax: + 44 (0)1582 422283  
E-mail: [mtl-enquiry@eaton.com](mailto:mtl-enquiry@eaton.com)  
[www.mtl-inst.com](http://www.mtl-inst.com)  
© 2016 Eaton  
All Rights Reserved  
Publication No. INS MTL PCL45USB Rev 2 080916  
September 2016

**EUROPE (EMEA):**  
+44 (0)1582 723633  
[mtl-enquiry@eaton.com](mailto:mtl-enquiry@eaton.com)

**THE AMERICAS:**  
+1 800 835 7075  
[mtl-us-info@eaton.com](mailto:mtl-us-info@eaton.com)

**ASIA-PACIFIC:**  
+65 6 645 9888  
[sales.mtlsing@eaton.com](mailto:sales.mtlsing@eaton.com)

The given data is only intended as a product description and should not be regarded as a legal warranty of properties or guarantee. In the interest of further technical developments, we reserve the right to make design changes.